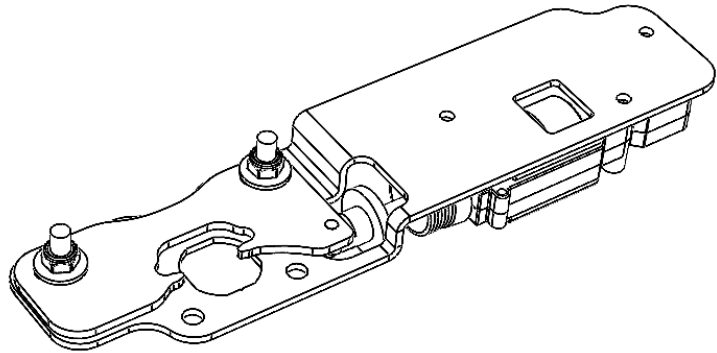


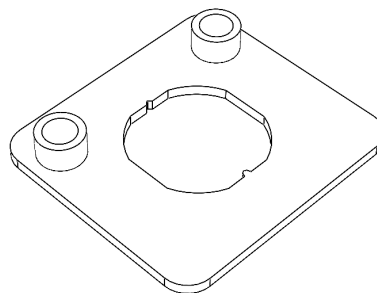
LL-CLK-REPLACEMENT

DESPATCH LIST

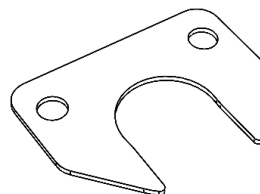
**1x
Actuator Assembly**



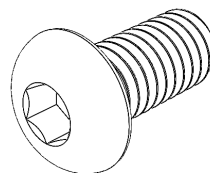
**1x
PRT-002878 Plate**



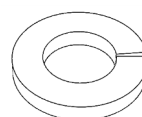
**1x
PRT-002879 Clip**



**2x
M6x12 Button Head Bolts**

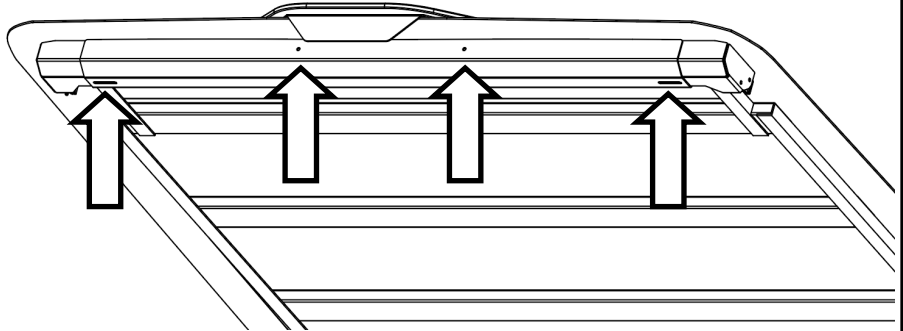


**2x
M6 Spring Washer**

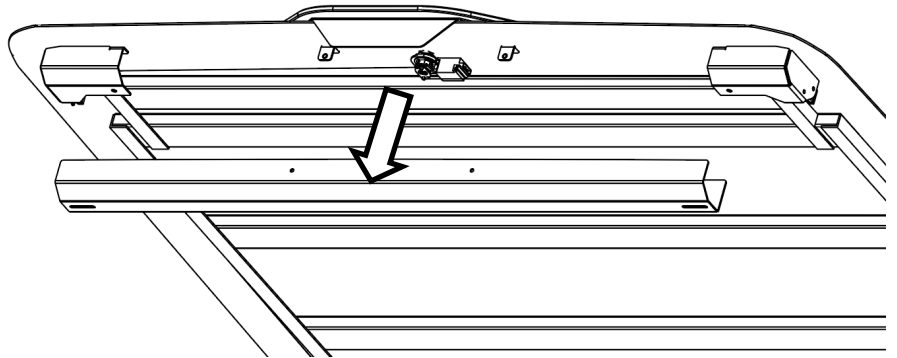


LL-CLK-REPLACEMENT

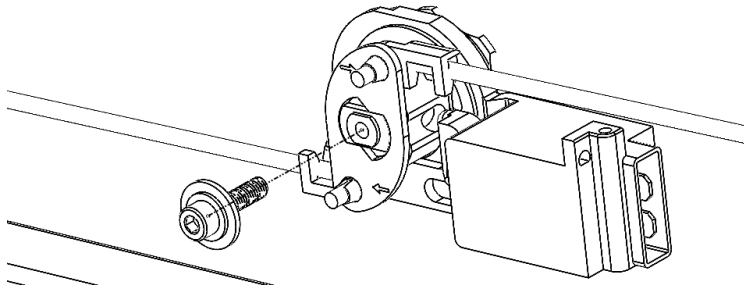
Remove the 4x bolts
holding the lock cover in
position



Remove the lock cover

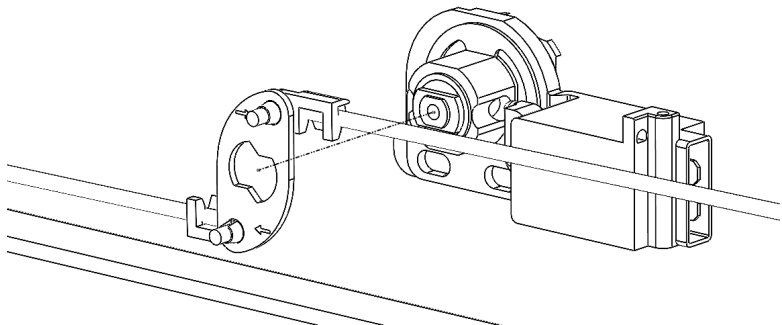


Remove the bolt and
washers from the
underside of the lock



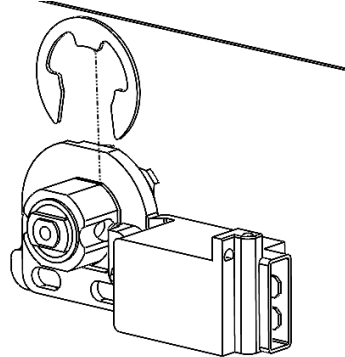
The lock cam and rods will
now come loose

Leave them hanging from
the side attachments

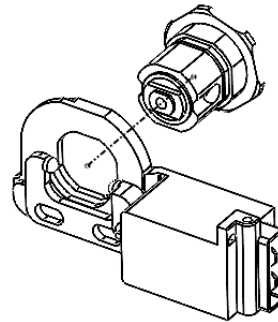


LL-CLK-REPLACEMENT

Remove the clip
holding the actuator
in position



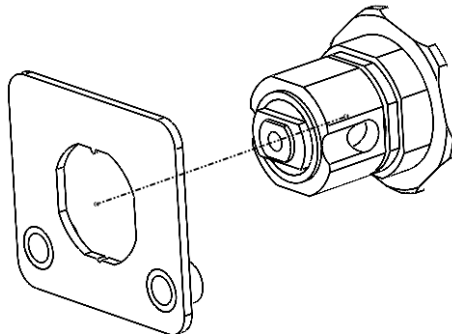
Unplug and remove
the actuator from
the lock



Insert PRT-002878 plate
onto the lock

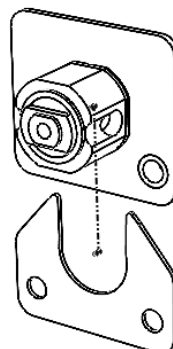
NOTE: Must be with the
threads in the
orientation shown

Tab will line up with
groove in the lock



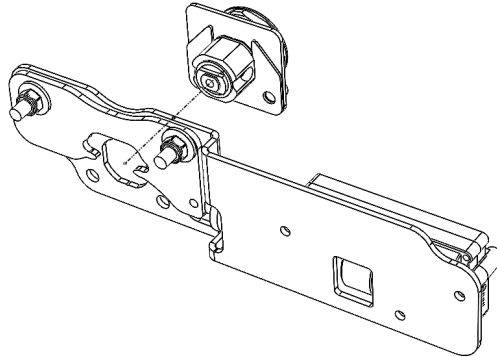
Insert PRT-002879 clip
into the lock to hold the
plate in place

NOTE: Must line up with
the holes in the plate



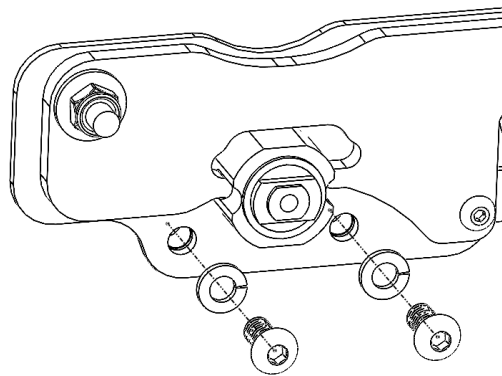
LL-CLK-REPLACEMENT

Install the new actuator assembly onto the lock

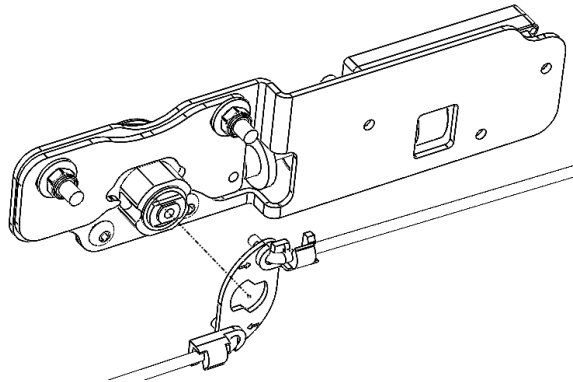


Insert 2x M6x12 bolts with M6 spring washers through the actuator assembly into the clamping plate threads

Ensure the bolts pass through the clip holes

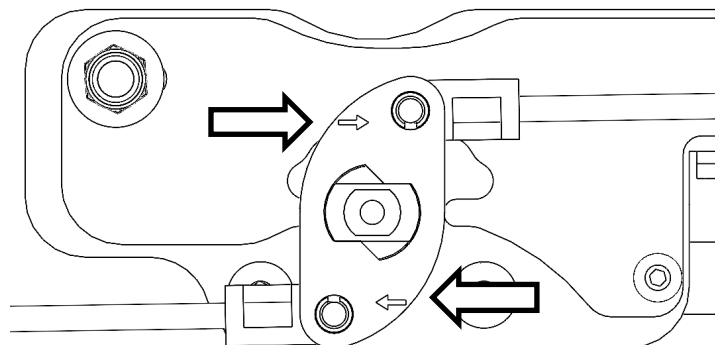


Place the original lock cam and rods back onto the base of the lock



IMPORTANT:
Ensure the arrows on the lock cam point directly along the rods

The lock mechanism won't work if they have flipped direction

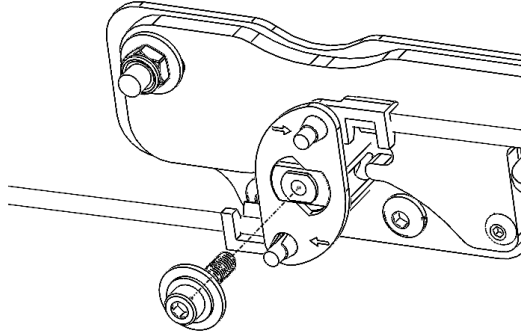


LL-CLK-REPLACEMENT

Re-install the original bolt and washers to the base of the lock

NOTE: Ensure the order of the washers remains the same (largest to smallest)

Lock cam should pivot freely once bolt is tight



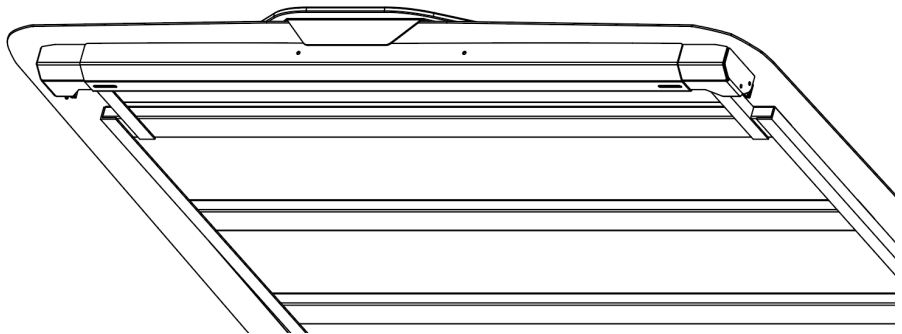
Plug the actuator wires into the lid wires

Close the Load-Lid and test the lock with the vehicle remote

If 'Lock' and 'Unlock' are around the wrong way, swap the wires over

Return the lock cover onto the Load-Lid

This should snugly hold the actuator in position



Re-install the four bolts holding the lock cover in position

